



NEC

Our public safety portfolio

Technology that empowers you to protect the public

necsws.com



Technology that empowers you to protect the public

Our business is all about making lives safer, healthier, better managed and mobile.

Our software underpins critical police, health, housing and government services, ensuring delivery of the right data at the right time to protect and improve the lives of everyone in our communities.

Our safety division focuses on creating the best tools to deliver your police and justice strategy. From strengthening your relationship with the public, to data-driven insights and minimising reoffending - we're here to support you with innovative tech that helps you make a difference.



Your goals are our goals

With growing pressure to integrate digital capabilities, streamline processes and enable strong partnership working, we're here to help you achieve these goals.

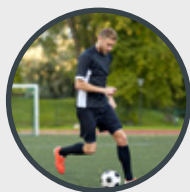
Our safety toolkit offers an end-to-end policing and justice digital strategy, starting with prevention right through to response and intervention - always underpinned with insight and data.

You can choose us to help you with one or all of these areas. Just let us know what suits.

Working together to protect people.



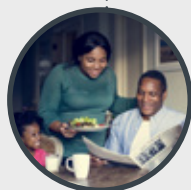
What do we really mean?



Intervene

We're helping you to support people like Jaden, who's turning his life around with the help and support he needs to look forward to a bright future.

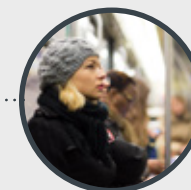
Support for second chances



Insight

We'll help you build insights that help protect people like the Jones family - by tracking incidents in their neighbourhood, your response means they can feel safe and secure in their home.

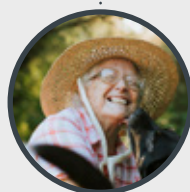
See the public in a whole new way



Pursue

We're helping you pursue known criminals so people like Kate can feel safe on her way home from visiting friends.

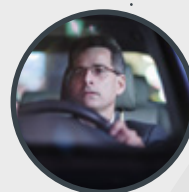
Technology supporting science, supporting justice



Respond

We're helping you respond to calls from people like Vera - she's called 999 three times this week and because you know her history, you've kept her safe when she was at her most vulnerable.

Empowering you to thrive



Prevent

We're helping you prevent crimes before they're committed, so people like John can get home to his partner knowing he's safe on the roads.

Putting the community at the heart of your policing

Prevent

Putting the community at the heart of your policing

Whether it's advice via social media or chat, or reporting suspicious behaviour, our artificial intelligence tools support you to guide the public to help prevent crimes before they happen.

Our software also recognises wanted people and vehicles, which helps you to detect, deter, and disrupt criminals before they commit further offences.



Cortex / Neoface Watch /
PentiP / ANPR

We're helping you prevent crimes before they're committed, so people like John can get home to his partner knowing he's safe on the roads.

Respond

Empowering you to thrive

We understand the police offer a broad service for non-emergency and emergency demand.

Our software tools help you to manage threat, harm and risk, whilst providing solid data for investigations which empower you to protect vulnerable people by engaging with them personally.

We're helping you respond to calls from people like Vera - she's called 999 three times this week and because you know her history, you've kept her safe when she was at her most vulnerable.

Insight

See the public in a whole new way

By capturing and recording high-quality data, you can get to know your community as people - seeing their history of interactions and tailoring your response to them as individuals.

Our solutions help you to gain more insight, analyse situations and spot patterns, so you can be more proactive, efficient and better at managing risk.

We'll help you build insights that help protect people like the Jones family - by tracking incidents in their neighbourhood, your response means they can feel safe and secure in their home.



Pursue

Technology supporting science, supporting justice

Collecting, analysing and storing scientific data is critical to securing justice for the public and increasing confidence that the guilty will be prosecuted and the innocent exonerated.

Our solutions give you confidence that your evidence is robust and will support the case accurately.



We're helping you pursue known criminals so people like Kate can feel safe on her way home from visiting friends.

Intervene

Support for second chances

Reoffending costs the UK £18.1 billion per year. With intelligent case management, you can understand the person behind the conviction and help set them on the path to rehabilitation.

Our systems have been developed to support professionals to manage offenders and work closely with other agencies to reform and rehabilitate individuals so they can become responsible citizens.



Pathways /
Intervention Manager / Media Manager

We're helping you to support people like Jaden, who's turning his life around with the help and support he needs to look forward to a bright future.

Our solutions

How our products sit under each of the priorities

Prevent

- Cortex
- NeoFace Watch
- PentIP
- ANPR

Insight

- Cortex
- Maps
- Connect
- Stream
- Charter

Respond

- Cortex
- Maps
- Duty Management
- Stream
- CAD

Pursue

- Evidence Manager
- NEC Forensics
- Stream

Intervene

- Pathways
- Intervention Manager
- Media Manager



Cortex

NEC

Bringing together all public contact onto one platform

Use this product if your strategy is to...

- Connect with your community using multiple contact channels
- Understand who your callers are as individual people with real lives
- Prioritise emergency demand on your service
- Upgrade to Cortex OmniChannel for an end-to-end contact management tool, or choose Cortex as a standalone for a radio-only ICCS
- Choose how you deploy - in the cloud, or on-premise.

Benefits

- Empower operators to make better decisions, faster
- Give your operators situational awareness that's as good as being on scene
- Send the right resources to the right incidents, saving lives
- Integrate all comms channels, not just radio and telephony.

Key features

- Create a dynamic, multi-media contact hub for your community that enables the public to connect with you on web chat, Chatbot and portal
- Equip your operators to prioritise the person, not just the incident, with smart contact histories that flag up vulnerabilities, previous interactions and known risks
- Save time when it really matters with an end-to-end contact and mapping tool that's easy to use and learn.

You may also be interested in
[Maps](#) / [NeoFace Watch](#) / [Connect](#)

South Yorkshire
POLICE



Empowering you to thrive | [Respond](#) | [Insight](#)

Mapping, gazetteer and location solutions

Use this product if your strategy is to...

- Have instant visibility on any location - with what3words, street view, CCTV & highways integration as standard
- Always have the most up-to-date view of the world with an advanced level of situational awareness & real-time accuracy
- Manage risk and respond fast with intelligent mapping insights, presented to your people when deploying officers, finding victims and solving crimes
- Embed a corporate mapping and location services solution that supports all the functions in your organisation.

Benefits

- An up-to-date view of the world, at all times
- Brings together information from multiple data resources quickly and with ease
- Excellent public satisfaction because you have the tools you need to find them.

Key features

- Multiple data sources for informed and confident decision-making
- Integrated with Google Maps technology for convenience and ease of use
- Security and quality guaranteed
- Advanced locational tools for pinpoint mapping accuracy.

You may also be interested in
Cortex / Connect



Stream

NEC

Use this product if your strategy is to...

- Optimise emergency responses by having more eyes on the ground
- Quickly gather critical information from the scene that will support confident and effective response decisions
- Give a complete account of the incident so you can adapt your response accordingly by securely and swiftly collecting vital intelligence from key witnesses or frontline officers.

Benefits

- Ensures frontline officers have all the information and intelligence they need to respond to incidents swiftly and successfully
- Access to a front-line view of how and where incidents are unfolding
- Make more effective dispatch decisions and better-protect your communities
- Game-changing software that provides unparalleled visibility, allowing content to be live-streamed from any location.

Key features

- Unlimited streaming for comprehensive visibility
- In-built language translation makes it easy to communicate with anyone on the scene
- Automatically records visual evidence to create a secure, hassle-free digital footprint
- Instant voice translation, supporting a huge number of languages, provides voice conversion into English text during a live session.

You may also be interested in
Cortex / Connect

Empowering you to thrive | **Respond**



CAD

NEC

Use this product if your strategy is to...

- Reduce demand on your control room by assigning the right resources to the right incidents first time
- Save on time and costs by putting more effective decision-making at your operators' fingertips
- Create a joined up, integrated control room providing total incident visibility.

Benefits

- Streamline resource management for a more tailored and effective response
- Continual feature development to keep your control room one step ahead
- Secure and reliable so you can focus on optimising your response and keeping people safe
- ESN-ready to provide you with the only end-to-end control room system you'll need.

Key features

- Streamlined duty management enables you to see who is on duty and who is available, as well as their skill set so you can optimise resource deployment
- Two-way integration with control room software including CRM and RMS gives you a complete picture of any incident and eliminates double-keying
- Built-in Maps software gives you instant visibility on any location or resource
- Efficient tagging and notification between users lets you share key information with colleagues in the control room to coordinate your response.

You may also be interested in
Cortex / Connect

Empowering you to thrive | **Respond**



NeoFace Watch



Use this product if your strategy is to...

- Proactively identify high-risk individuals and groups to protect the public from harm
- Leverage the latest technologies that mitigate public risk from the most serious and organised crimes including terrorism, exploitation, slavery and trafficking
- Uphold the highest values of integrity and impartiality by choosing the world's most trusted biometrics solution, verified by independent panels globally.

Benefits

- Save lives before they need saving
- More eyes on the ground - increase capacity of officers on the front line
- Become a trusted police force using the most accurate biometrics solution available, mitigating public perceptions about biometrics generating mistaken identity situations.

Key features

- Prevent a known terrorist from committing a crime in a public place by equipping officers with a tool that flags up known criminals at point of entry for further examination
- Used at stadiums, on public transport, at major events and more.

You may also be interested in
Cortex / Connect



Putting the community at the heart
of your policing | [Prevent](#) | [Pursue](#)



NEC Forensics



Use this product if your strategy is to...

- Create a central repository for crime scene evidence, making it easier for your teams to bring criminals to justice
- Share evidential data across agencies and make it easier to connect to national and local systems and present what you need to win in court
- Take digital evidence collection mobile so that your investigators can capture accurately at the scene of the crime.

Benefits

- Enable your CSIs to submit fingerprints to the Bureau remotely to speed up investigations
- Set up intelligent forms that request information in priority order so that vital evidence is preserved
- Make it possible to record evidence digitally even in remote areas through an offline mobile mode
- Enable better integration with third party systems to reduce re-keying.

Key features

- Open integration, making it easy to connect to national and local systems with open APIs
- Highly secure with built-in role-based access levels, managing risk
- Built-in workflows with smart processes such as barcode identifiers to take away the need for paper-based searches
- Used by over 70% of UK police forces and ready to integrate to the eDNA service and the PNC.

You may also be interested in
Connect / NeoFace Watch

Technology supporting science, supporting justice | Pursue



Intervention Manager



Use this product if your strategy is to...

- Bring about the positive rehabilitation of offenders in your community
- Support partnership working across the police and justice sector to benefit community safety
- Understand more about returning offenders and how their behaviour is being corrected through an effective justice system.

Benefits

- Support probation officers and support workers to make a difference when managing offender rehabilitation
- See all probation activity in one place from attendance to educational achievements, placing the emphasis on the individual and not on the system
- Streamline your relationship with the National Probation Service, community providers and prisons.

Key features

- Accessible insights about the individual in a single case file covering activities
- Intuitive and interactive interface, making it easy to deploy
- Removal of manual processes using scheduling tools that help you plan, manage and report on all probation activities.

You may also be interested in
Media Manager / Pathways

Support for second chances | **Intervene**



Pathways

NEC

Use this product if your strategy is to...

- Meaningfully rehabilitate and support the young people in your care
- Free up youth justice workers' time on admin and systems, reinvested into time spent with clients
- Make it easy to understand the person in front of you, wherever they are on their journey.

Benefits

- Intuitively does what you need it to do because it's built by your peers: youth justice workers
- Get automatic updates from the Youth Justice Board, so you'll always comply with requirements
- Intuitive and easy to learn, freeing up your people to do what they do best - care and support.

Key features

- Cloud-based, so accessible on any device, wherever you are
- Add notes and assessment data as you go, not just when you get back to the office
- Collaborative and shareable with your partner agencies through tagging and notification alerts, especially useful for cross-case working
- Data transfer to auto-populate, meaning no double-keying and more time spent doing the job you love, supporting and rehabilitating young people.

You may also be interested in
Intervention Manager / Media Manager



Support for second chances | **Intervene**



Media Manager



Use this product if your strategy is to...

- Digitally protect sensitive data from recordings of group probation meetings and one-to-one interviews
- Safeguard your officers, probation officers and prison workforce and promote continuous improvement when interacting with offenders, prisoners and probationers.

Benefits

- Safeguard employees who are interacting with offenders by securely recording and storing sessions
- Preserve important data from interviews in a live state, accessible later in the cloud
- Make it easy to share sensitive recorded data securely with trusted agencies
- Help to create a trusted environment for the offender in an interview situation.

Key features

- Dedicated smartphone locked down to only run installed media manager app
- Easy-to-use app functionality that securely records sensitive interactions between justice and policing agents and offenders
- Integrated system to store and share recorded interviews for collaborative working across police and justice
- Automated compliance with the latest data protection regulations.

You may also be interested in
Pathways / Intervention Manager

Support for second chances | [Intervene](#)



Evidence Manager



Use this product if your strategy is to...

- Streamline your police interviewing process
- Make it easier to bundle evidence into a single document
- Enable officers to create and prepare case files quicker and from anywhere.

Benefits

- Make it possible for police and prison officers to collate PDF, audio, video and image-based evidence into one case file
- Never lose information, creating stronger cases that bring about justice for victims
- Easy case transition to courtroom including remote access and fast searching.

Key features

- Compliant with BS 10008 for legal admissibility of electronic evidence
- In-built file conversion capability for ease of management and presentation
- Scalable for thousands of users and terabytes of storage
- Automatic numbering of evidence documents
- MOPI-compliant records management and retention capability
- Role-based access controls, full audit trail for all activities.

You may also be interested in
Media Manager / Intervention Manager
/ Pathways / Forensics

Support for second chances | [Intervene](#)



Civil Enforcement

NEC

Use this product if your strategy is to...

- Proactively protect the public from dangerous drivers committing motoring offences
- Drive down speeding offences to reduce deaths on roads
- Make it easy for officers to issue enforcement notices, manage camera evidence and issue traffic-offence reports on the move.

Benefits

- Give officers and staff a complete view of all evidence relating to a road traffic offence
- Save time through automated data transfer for issuing prosecution notices
- Make it easier for the public to view camera evidence on any device, and accept or dispute, reducing information requests by up to half
- No need to double-key the same information, fully accessible from the roadside.

Key features

- Fully digital tool, saving time, reducing paper and accessible wherever the officer is
- Directly connected to PentIP and local policing systems for a one-stop flow that manages civil enforcements end-to-end.

You may also be interested in
ANPR

Technology supporting science, supporting justice | [Pursue](#) | [Prevent](#)



ANPR

NEC

Use this product if your strategy is to...

- Advocate proactive policing, tracking known risk targets before they do any damage
- Protect the public with invisible safety cameras that trigger police response
- Catch criminals on the move, fast.

Benefits

- Locate suspects quickly for live and historic incidents
- Retrace the steps of a vehicle to build evidence
- Enhance your policing insight with an additional layer of intel from a network of safety cameras.

Key features

- Safety camera partnerships working together to help you protect the public
- Easy-to-view interface, making it easier to catch the offender
- Integrated across your police force, one source of ANPR information.

You may also be interested in
PentiP / Cortex

Putting the community at the heart of your policing | **Prevent** | **Respond**



NEC Duty Management

NEC

Use this product if your strategy is to...

- Promote officer welfare and protect against burnout
- Help staff balance work and personal commitments without compromising on service
- Manage demand effectively with the right people deployed at the right times
- Reduce time spent managing time, reinvested into reducing crime and saving lives
- Help officers manage court appearances and deliver the best public service.

Benefits

- Make it possible for officers to commit to court appearances with confidence, giving the victim the confidence that it's a personal police service
- Help your officers to manage shift changes, rest days and annual leave on the move and at home
- Enable duty managers to highlight and predict areas of resource challenges and arrange support.

Key features

- Web-based and intuitive interface, accessible from any device
- Built-in welfare regulations, automatically updated
- Analytics functionality to make scheduling more efficient
- Used by more than 60,000 officers in the UK
- Configurable with user profiles to control access and ready to integrate with open APIs.

You may also be interested
in **Connect**

Empowering you to thrive | **Respond**



Connect

NEC

Use this product if your strategy is to...

- Proactively protect officers on the frontline with enhanced situational awareness, before they go to a job
- A single view of your community and its threats, risks and crime patterns
- Protect the most vulnerable in society and bring justice to victims of crime.

Benefits

- Enable your officers to automatically assign and escalate tasks for a faster response
- Build a platform that is at the heart of your force intelligence, ready to grow and connect with third-party solutions
- Easy to use on any device, built in the cloud and future-proof
- Truly collaborative and already used by 16 UK police forces and more than 100,000 officers every day.

Key features

- An intelligent database that records every person, object, location and event to create connected records
- Shareable intel with partners and the public to help create true partnership working and build community relations
- Designed to grow as a platform for all your modular policing needs, including digital evidence, public engagement, missing persons and property management.

You may also be interested in
Cortex / Maps

See the public in a whole new way | **Insight**

Charter

NEC

Use this product if your strategy is to...

- Authorise, conduct and manage covert activities, as well as analysing the resulting intelligence
- Manage intrusive covert activities, as well as comply with requirements for legislation and local policy
- Meet the demands of multi-agency working.

Benefits

- **Unrivalled Experience** - Sets the industry standard for covert management solutions
- **Operational Oversight** - Seamless integration and data searching across all modules including Surveillance, Human Intelligence, and Communications data authorities
- **Reliable Technology** - Trusted by law enforcement agencies of all sizes in the UK, EU, and North America for over twenty years.

Key features

- **Highly Configurable** - Processes data in line with even the toughest privacy legislation
- **Data Quality and Reporting** - Intuitive user interface combined with configurable help text improves the quality of each application, even those who rarely use the system
- **Reduced Risk** - All data meets operational security requirements, and reduces the risk of data compromise.

You may also be interested in
Cortex / Connect

Empowering you to thrive | [Respond](#)

NEC

necsws.com

